

TOSHIBA

MULTIFUNCTIONAL DIGITAL SYSTEMS

SAP R/3 Printing Device Type File Installation Guide

 e-STUDIO 520/600/720/850

Table of Contents

1. Introduction	1
1.1 SAP Printing Environment	1
2. Installation	2
3. Verification of Device Type File.....	10
4. Creation of Output Device.....	14
5. Verification of Output Device	20
6. Specific Features and Configuration.....	22
6.1 Input Tray Selection	22
6.2 Output Tray Selection	22
6.3 Paper Selection	22
6.4 Duplex Selection	23
6.5 Orientation Selection	23
6.6 Hole Punch	23
6.7 Stapling Function	24
6.8 Private Print	24
6.9 Proof Print.....	24
6.10 Booklet and Saddle Stitch.....	25
6.11 Department Code.....	25
6.12 BOX Mode	26
6.13 Inserter Option	26

<Trademarks>

SAP, R/3, mySAP, mySAP.com, xApps, xApp, SAP NetWeaver, and other SAP products and services mentioned herein as well as their respective logos are trademarks or registered trademarks of SAP AG in Germany and in several other countries all over the world. All other product and service names mentioned are the trademarks of their respective companies.

<Warning>

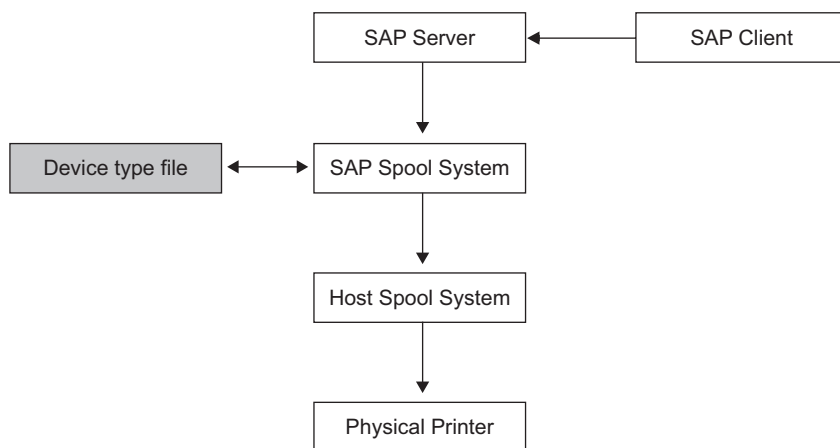
You may not, nor cause or permit any third party to, modify, adapt, merge, translate, reverse compile, reverse assemble, or reverse engineer the Software. You may not use the Software, except in accordance with this license. No title to the intellectual property in the Software is transferred to you and full ownership is retained by TTEC or its suppliers. Source code of the Software is not licensed to you. You will be held legally responsible for any copyright infringement, unauthorized transfer, reproduction or use of the Software or its documentation.



1. Introduction

This document describes the step-wise procedure to install and configure the device type for e-STUDIO 850 Series printers in SAP R/3. SAP administrator can implement the printer specific features by inserting the necessary PDL/PCL commands given in the Device configuration section.

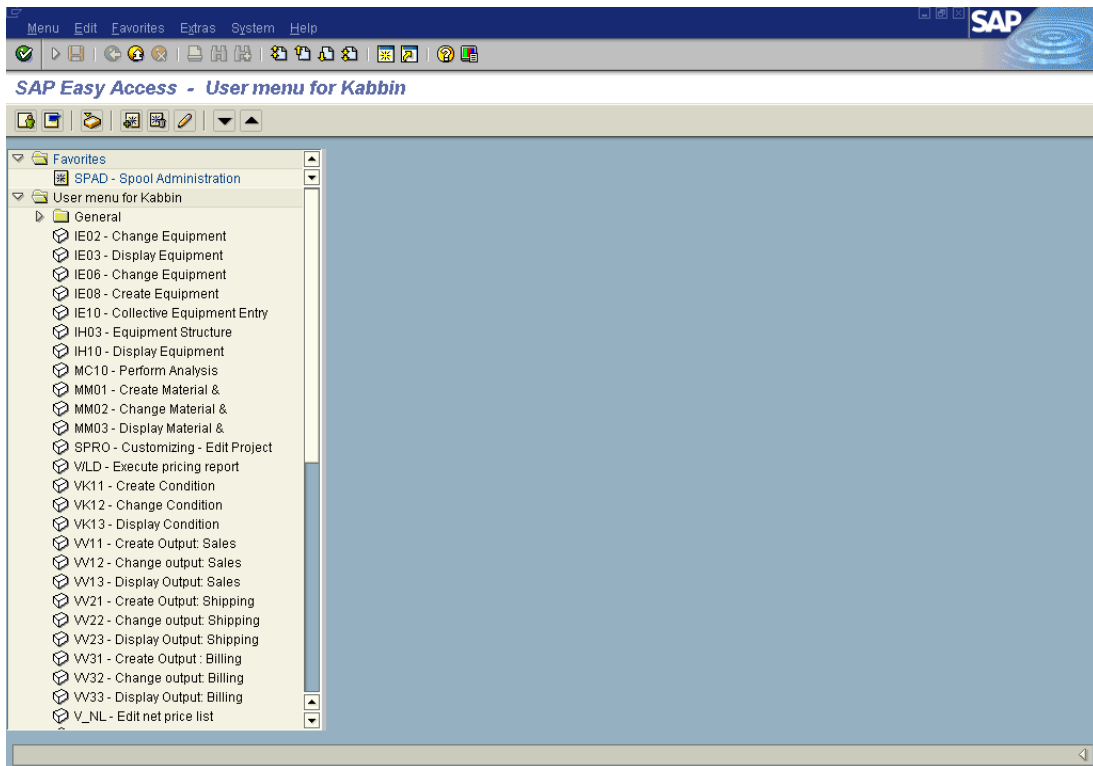
1.1 SAP Printing Environment



1. SAP Client raises the print Request.
2. SAP Server will pass on the request to SAP spool system based on type of printer selected by the Client program.
3. SAP spool system will consult Device type file (.PRI File) corresponding to the output device. Based on configuration and control information present in Device type file, it will generate Printing data and Control Information.
4. Based on the "Access method" configured for the output device, SAP Printing Subsystem will operate in the respective way.

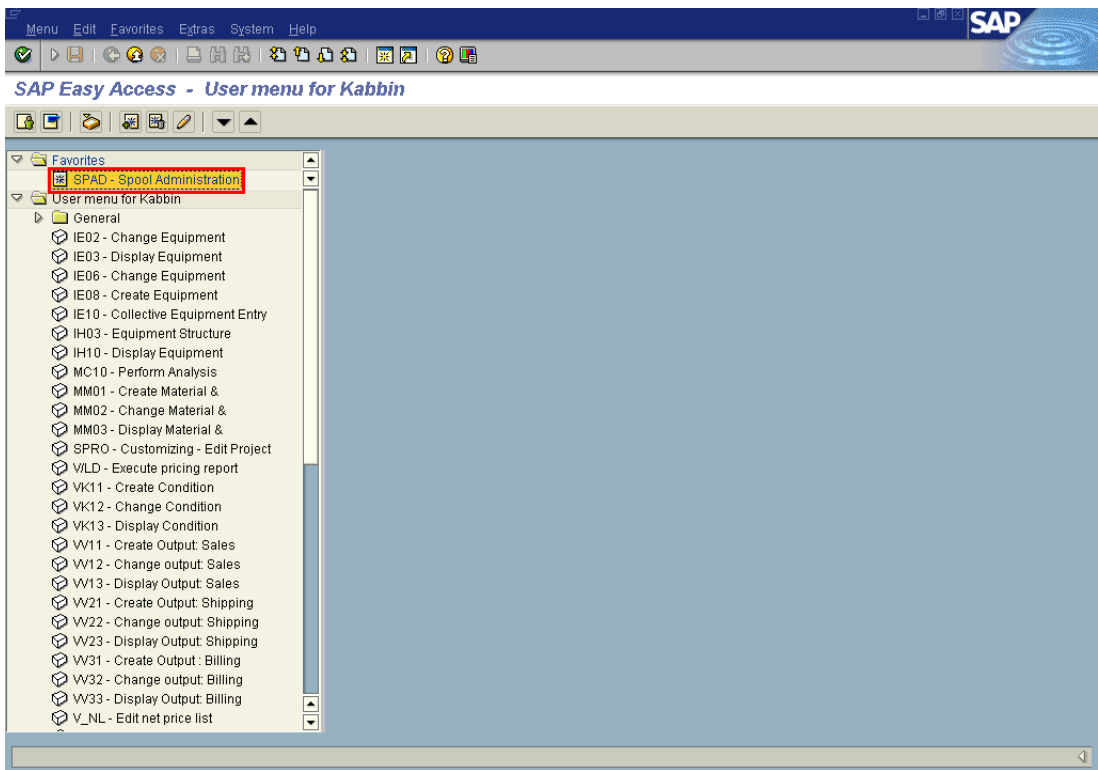
2. Installation

To install a new device type into SAP, follow the procedure described below.
After you have logged on to SAP, the following screen is displayed.



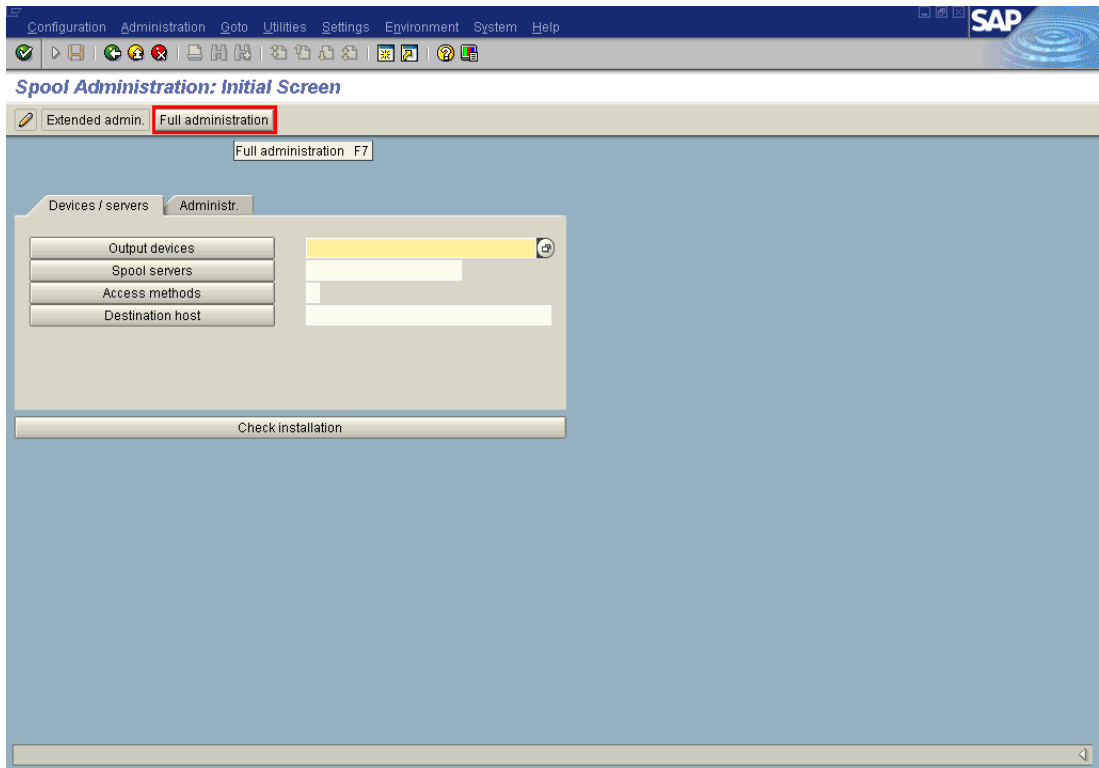
© Copyright 2005 SAP AG, All rights reserved.

Click on the “**Spool Administration**” tab.



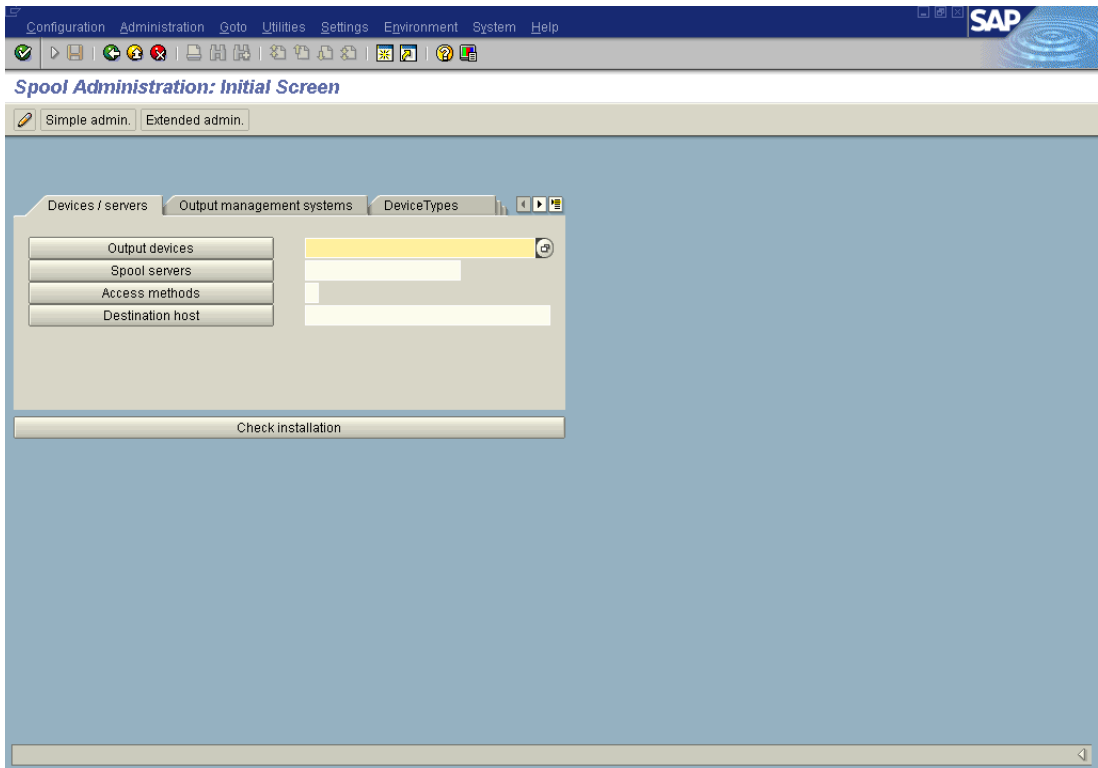
© Copyright 2005 SAP AG, All rights reserved.

Once you Press enter the following screen is displayed.



© Copyright 2005 SAP AG, All rights reserved.

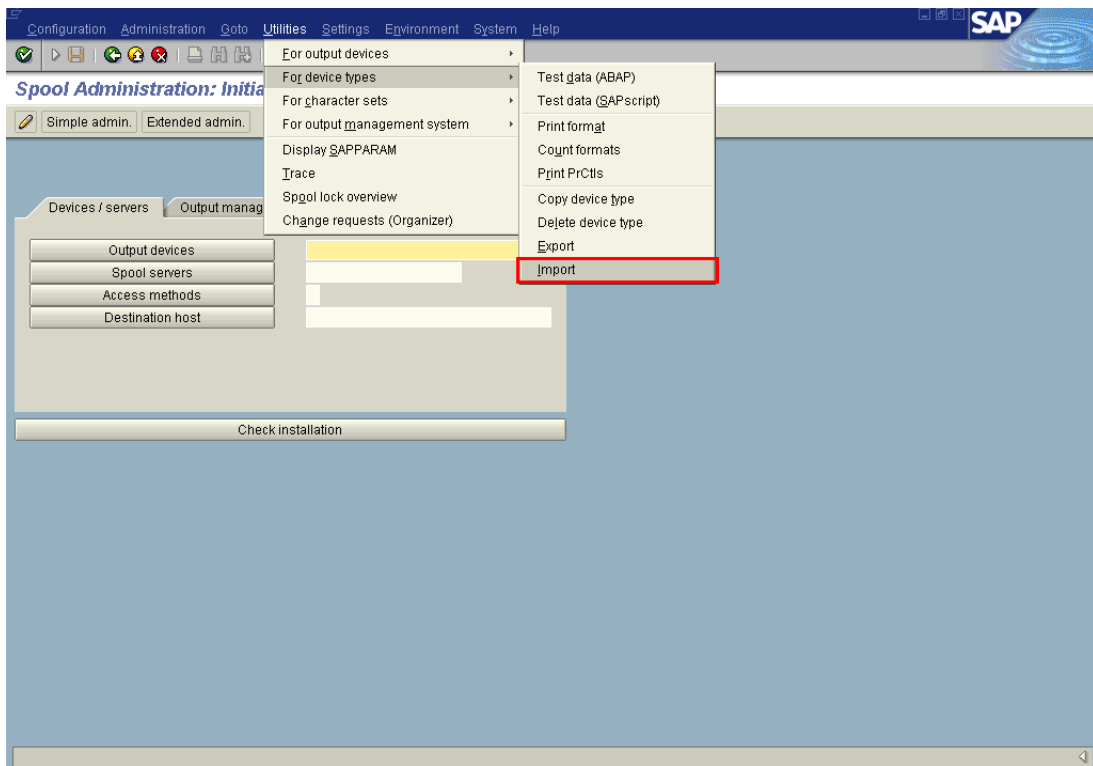
Press on the push-button **“Full administration”**. The following screen is displayed.



© Copyright 2005 SAP AG, All rights reserved.

In the menu bar, go to **“Utilities”** → **“For device types”** → **“Import”** as displayed in the following screen.

2. Installation (Cont.)



© Copyright 2005 SAP AG, All rights reserved.

Once you press “**Import**”, the following screen is displayed.

Select the radio button “**Device Type**” and enter the name of the device type (.PRI) file without file extension in the input field box “**Object name**”. (E.g. if the device type file name is ZTSB850.pri only ZTSB850) as shown in the screen below. Make sure the entry in the field **Mode (EXPORT/IMPORT)** is written as “**IMPORT**”.

Program Edit Goto System Help

SAP

SAPscript Export to Dataset / SAPscript Import from Dataset

Object selection and session ctrl

☐ Form

☐ Style

☐ Standard text

Text ID ST

Language EN

☒ **Device Type**

Object name ZTSB850

Mode (EXPORT/IMPORT) IMPORT

Ctrl parameters for file operation

☒ From/on frontend

☐ From/on application server

Dataset name C:\temp*****&&&

☐ Binary file format

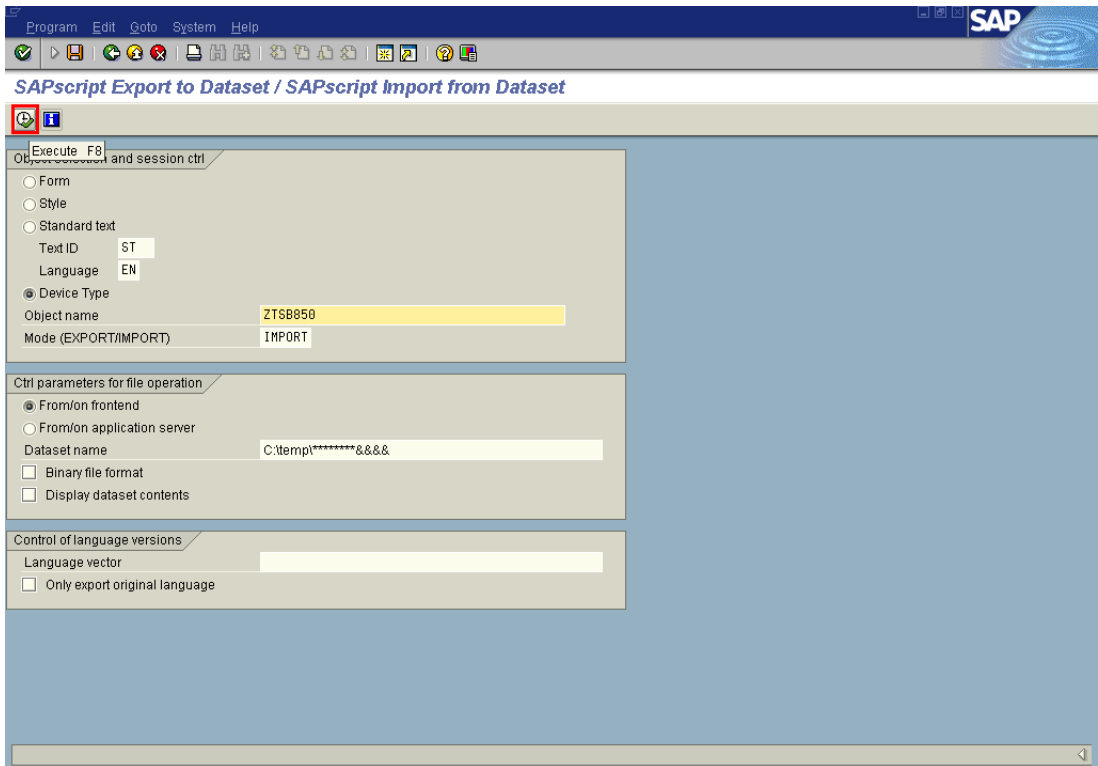
☐ Display dataset contents

Control of language versions

Language vector

☐ Only export original language

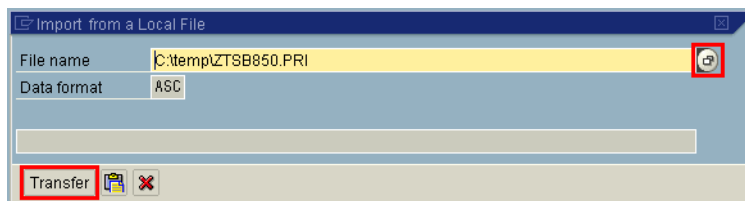
© Copyright 2005 SAP AG, All rights reserved.



© Copyright 2005 SAP AG, All rights reserved.

Press “F8” to proceed with import.

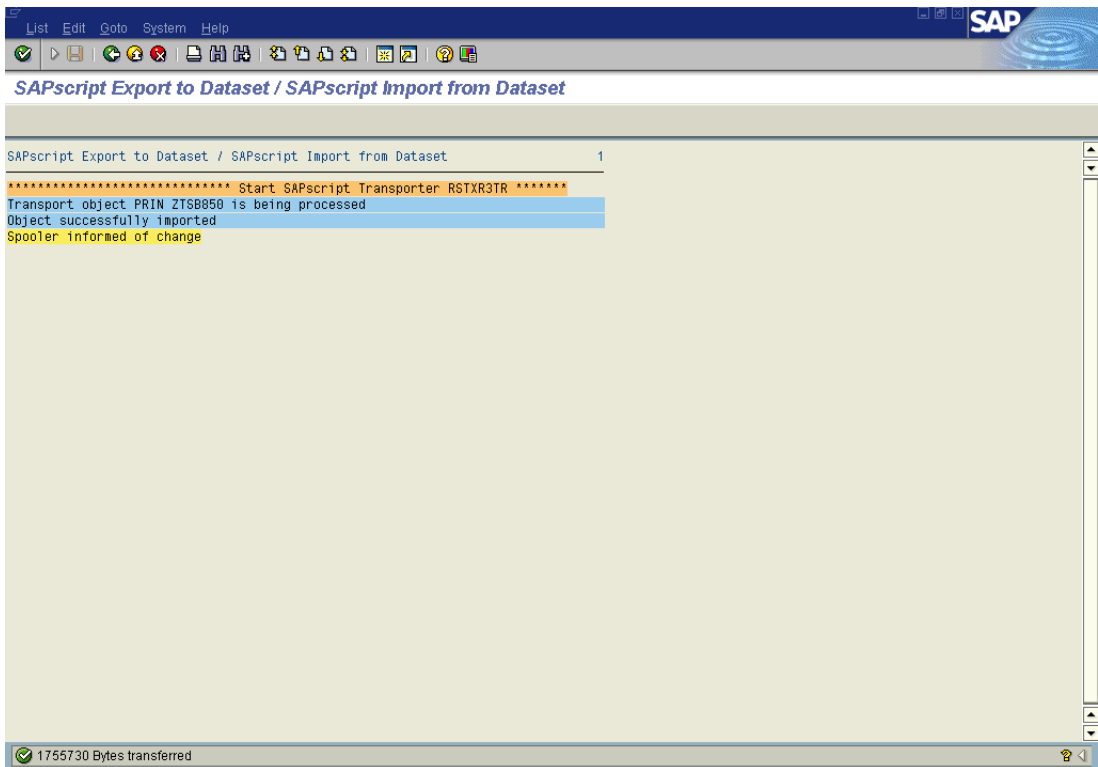
To locate the ZTSB850.PRI on local system, **Press** this button.



© Copyright 2005 SAP AG, All rights reserved.

After locating PRI file, the screen displayed would be as above.
Import process will start as soon as **Transfer** is pressed.

On successful completion of import, the following message would be displayed.

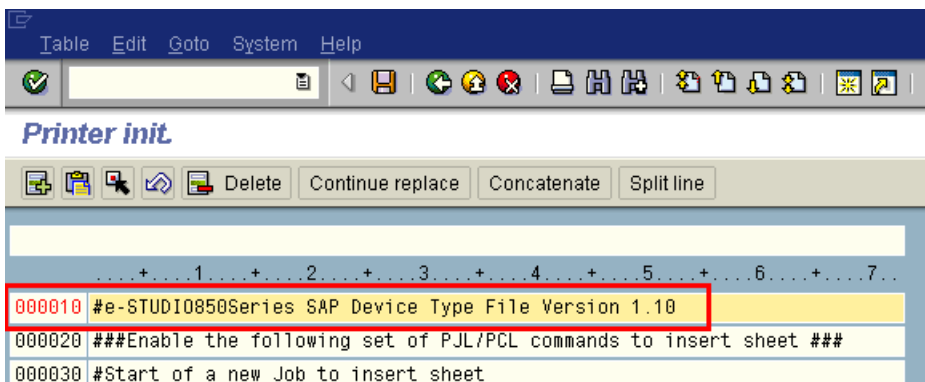


© Copyright 2005 SAP AG, All rights reserved.

Version Check:

The Device type file version is described in the installed PRI file.

Check it in the "Printer init." menu of the SAP system.

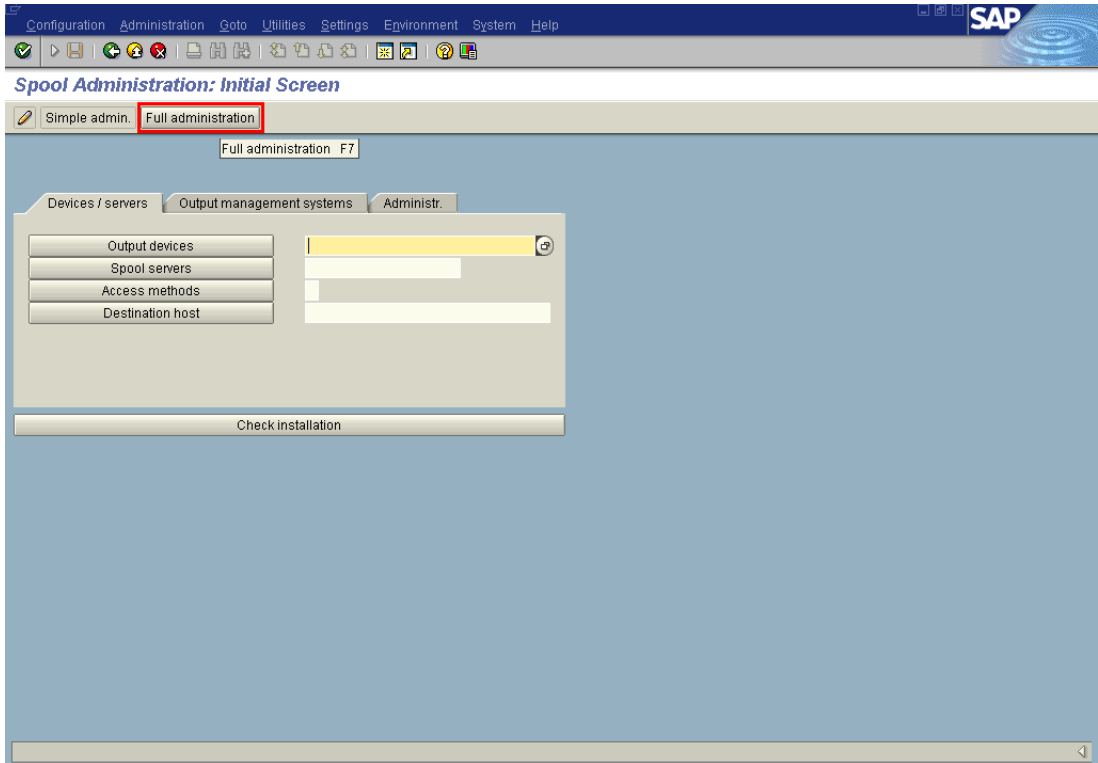


© Copyright 2006 SAP AG, All rights reserved.

3. Verification of Device Type File

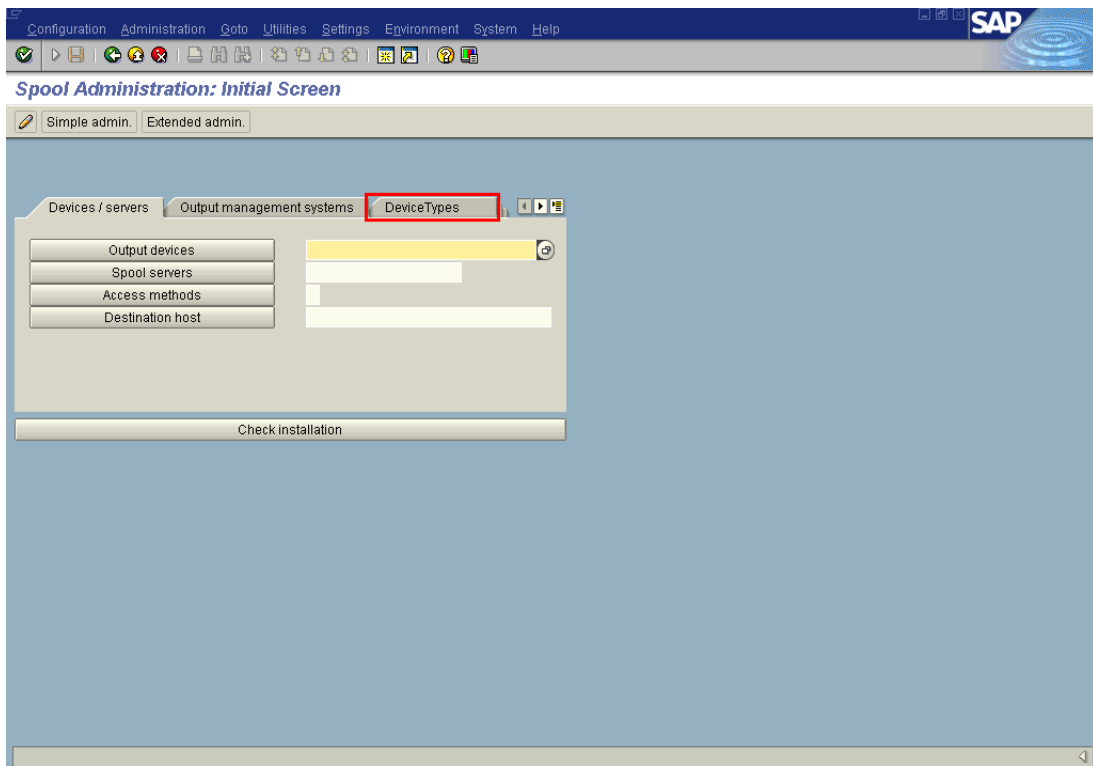
Once the device type is imported, it needs to be verified whether the newly imported device type appears in the standard list of all device types in SAP R/3 or not. To verify this same, follow the steps given below.

In the initial screen of SAP, type the transaction code “**SPAD**” in the command window and press “Enter”, the following screen is displayed.



© Copyright 2005 SAP AG, All rights reserved.

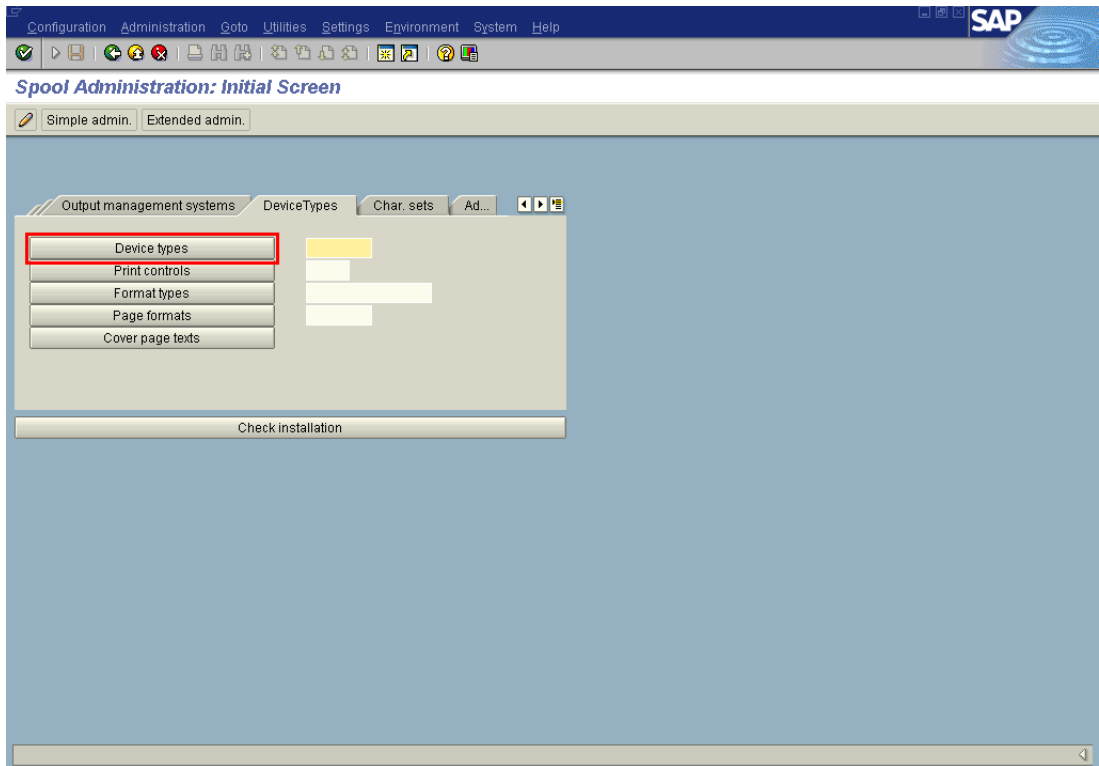
Click on **Full administration** and the following screen will be displayed.



© Copyright 2005 SAP AG, All rights reserved.

Click on the **Device Types**.

3. Verification of Device Type File (Cont.)



© Copyright 2005 SAP AG, All rights reserved.

On clicking on **Device types**, list of device types will be displayed as in following screen.

Device type Edit Go to Utilities System Help							SAP	
Spool Administration: List of Device Types (155 Entries)								
<div> <div> <div></div> <div></div> <div></div> <div></div> <div></div> <div></div> <div></div> <div></div> <div></div> <div></div> <div></div> <div></div> <div></div> <div></div> <div></div> <div></div> <div></div> <div></div> <div></div> <div></div> <div></div> <div></div> <div></div> <div></div> <div></div> <div></div> <div></div> <div></div> <div></div> <div></div> <div></div> <div></div> <div></div> <div></div> <div></div> <div></div> <div></div> <div></div> <div></div> <div></div> <div></div> <div></div> <div></div> <div></div> <div></div> <div></div> <div></div> <div></div> <div></div> <div></div> <div></div> <div></div> <div></div> <div></div> <div></div> <div></div> <div></div> <div></div> <div></div> <div></div> <div></div> <div></div> <div></div> <div></div> <div></div> <div></div> <div></div> <div></div> <div></div> <div></div> <div></div> <div></div> <div></div> <div></div> <div></div> <div></div> <div></div> <div></div> <div></div> <div></div> <div></div> <div></div> <div></div> <div></div> <div></div> <div></div> <div></div> <div></div> <div></div> <div></div> <div></div> <div></div> <div></div> <div></div> <div></div> <div></div> <div></div> <div></div> <div></div> <div></div> <div></div> <div></div> <div></div> <div></div> <div></div> <div></div> <div></div> <div></div> <div></div> <div></div> <div></div> <div></div> <div></div> <div></div> <div></div> <div></div> <div></div> <div></div> <div></div> <div></div> <div></div> <div></div> <div></div> <div></div> <div></div> <div></div> <div></div> <div></div> <div></div> <div></div> <div></div> <div></div> <div></div> <div></div> <div></div> <div></div> <div></div> <div></div> <div></div> <div></div> <div></div> <div></div> <div></div> <div></div> <div></div> <div></div> <div></div> <div></div> <div></div> <div></div> <div></div> <div></div> <div></div> <div></div> <div></div> <div></div> <div></div> <div></div> <div></div> <div></div> <div></div> <div></div> <div></div> <div></div> <div></div> <div></div> <div></div> <div></div> <div></div> <div></div> <div></div> <div></div> <div></div> <div></div> <div></div> <div></div> <div></div> <div></div> <div></div> <div></div> <div></div> <div></div> <div></div> <div></div> <div></div> <div></div> <div></div> <div></div> <div></div> <div></div> <div></div> <div></div> <div></div> <div></div> <div></div> <div></div> <div></div> <div></div> <div></div> <div></div> <div></div> <div></div> <div></div> <div></div> <div></div> <div></div> <div></div> <div></div> <div></div> <div></div> <div></div> <div></div> <div></div> <div></div> <div></div> <div></div> <div></div> <div></div> <div></div> <div></div> <div></div> <div></div> <div></div> <div></div> <div></div> <div></div> <div></div> <div></div> <div></div> <div></div> <div></div> <div></div> <div></div> <div></div> <div></div> <div></div> <div></div> <div></div> <div></div> <div></div> <div></div> <div></div> <div></div> <div></div> <div></div> <div></div> <div></div> <div></div> <div></div> <div></div> <div></div> <div></div> <div></div> <div></div> <div></div> <div></div> <div></div> <div></div> <div></div> <div></div> <div></div> <div></div> <div></div> <div></div> <div></div> <div></div> <div></div> <div></div> <div></div> <div></div> <div></div> <div></div> <div></div> <div></div> <div></div> <div></div> <div></div> <div></div> <div></div> <div></div> <div></div> <div></div> <div></div> <div></div> <div></div> <div></div> <div></div> <div></div> <div></div> <div></div> <div></div> <div></div> <div></div> <div></div> <div></div> <div></div> <div></div> <div></div> <div></div> <div></div> <div></div> <div></div> <div></div> <div></div> <div></div> <div></div> <div></div> <div></div> <div></div> <div></div> <div></div> <div></div> <div></div> <div></div> <div></div> <div></div> <div></div> <div></div> <div></div> <div></div> <div></div> <div></div> <div></div> <div></div> <div></div> <div></div> <div></div> <div></div> <div></div> <div></div> <div></div> <div></div> <div></div> <div></div> <div></div> <div></div> <div></div> <div></div> <div></div> <div></div> <div></div> <div></div> <div></div> <div></div> <div></div> <div></div> <div></div> <div></div> <div></div> <div></div> <div></div> <div></div> <div></div> <div></div> <div></div> <div></div> <div></div> <div></div> <div></div> <div></div> <div></div> <div></div> <div></div> <div></div> <div></div> <div></div> <div></div> <div></div> <div></div> <div></div> <div></div> <div></div> <div></div> <div></div> <div></div> <div></div> <div></div> <div></div> <div></div> <div></div> <div></div> <div></div> <div></div> <div></div> <div></div> <div></div> <div></div> <div></div> <div></div> <div></div> <div></div> <div></div> <div></div> <div></div> <div></div> <div></div> <div></div> <div></div> <div></div> <div></div> <div></div> <div></div> <div></div> <div></div> <div></div> <div></div> <div></div> <div></div> <div></div> <div></div> <div></div> <div></div> <div></div> <div></div> <div></div> <div></div> <div></div> <div></div> <div></div> <div></div> <div></div> <div></div> <div></div> <div></div> <div></div> <div></div> <div></div> <div></div> <div></div> <div></div> <div></div> <div></div> <div></div> <div></div> <div></div> <div></div> <div></div> <div></div> <div></div> <div></div> <div></div> <div></div> <div></div> <div></div> <div></div> <div></div> <div></div> <div></div> <div></div> <div></div> <div></div> <div></div> <div></div> <div></div> <div></div> <div></div> <div></div> <div></div> <div></div> <div></div> <div></div> <div></div> <div></div> <div></div> <div></div> <div></div> <div></div> <div></div> <div></div> <div></div> <div></div> <div></div> <div></div> <div></div> <div></div> <div></div> <div></div> <div></div> <div></div> <div></div> <div></div> <div></div> <div></div> <div></div> <div></div> <div></div> <div></div> <div></div> <div></div> <div></div> <div></div> <div></div> <div></div> <div></div> <div></div> <div></div> <div></div> <div></div> <div></div> <div></div> <div></div> <div></div> <div></div> <div></div> <div></div> <div></div> <div></div> <div></div> <div></div> <div></div> <div></div> <div></div> <div></div> <div></div> <div></div> <div></div> <div></div> <div></div> <div></div> <div></div> <div></div> <div></div> <div></div> <div></div> <div></div> <div></div> <div></div> <div></div> <div></div> <div></div> <div></div> <div></div> <div></div> <div></div> <div></div> <div></div> <div></div> <div></div> <div></div> <div></div> <div></div> <div></div> <div></div> <div></div> <div></div> <div></div> <div></div> <div></div> <div></div> <div></div> <div></div> <div></div> <div></div> <div></div> <div></div> <div></div> <div></div> <div></div> <div></div> <div></div> <div></div> <div></div> <div></div> <div></div> <div></div> <div></div> <div></div> <div></div> <div></div> <div></div> <div></div> <div></div> <div></div> <div></div> <div></div> <div></div> <div></div> <div></div> <div></div> <div></div> <div></div> <div></div> <div></div> <div></div> <div></div> <div></div> <div></div> <div></div> <div></div> <div></div> <div></div> <div></div> <div></div> <div></div> <div></div> <div></div> <div></div> <div></div> <div></div> <div></div> <div></div> <div></div> <div></div> <div></div> <div></div> <div></div> <div></div> <div></div> <div></div> <div></div> <div></div> <div></div> <div></div> <div></div> <div></div> <div></div> <div></div> <div></div> <div></div> <div></div> <div></div> <div></div> <div></div> <div></div> <div></div> <div></div> <div></div> <div></div> <div></div> <div></div> <div></div> <div></div> <div></div> <div></div> <div></div> <div></div> <div></div> <div></div> <div></div> <div></div> <div></div> <div></div> <div></div> <div></div> <div></div> <div></div> <div></div> <div></div> <div></div> <div></div> <div></div> <div></div> <div></div> <div></div> <div></div> <div></div> <div></div> <div></div> <div></div> <div></div> <div></div> <div></div> <div></div> <div></div> <div></div> <div></div> <div></div> <div></div> <div></div> <div></div> <div></div> <div></div> <div></div> <div></div> <div></div> <div></div> <div></div> <div></div> <div></div> <div></div> <div></div> <div></div> <div></div> <div></div> <div></div> <div></div> <div></div> <div></div> <div></div> <div></div> <div></div> <div></div> <div></div> <div></div> <div></div> <div></div> <div></div> <div></div> <div></div> <div></div> <div></div> <div></div> <div></div> <div></div> <div></div> <div></div> <div></div> <div></div> <div></div> <div></div> <div></div> <div></div> <div></div> <div></div> <div></div> <div></div> <div></div> <div></div> <div></div> <div></div> <div></div> <div></div> <div></div> <div></div> <div></div> <div></div> <div></div> <div></div> <div></div> <div></div> <div></div> <div></div> <div></div> <div></div> <div></div> <div></div> <div></div> <div></div> <div></div> <div></div> <div></div> <div></div> <div></div> <div></div> <div></div> <div></div> <div></div> <div></div> <div></div> <div></div> <div></div> <div></div> <div></div> <div></div> <div></div> <div></div> <div></div> <div></div> <div></div> <div></div> <div></div> <div></div> <div></div> <div></div> <div></div> <div></div> <div></div> <div></div> <div></div> <div></div> <div></div> <div></div> <div></div> <div></div> <div></div> <div></div> <div></div> <div></div> <div></div> <div></div> <div></div> <div></div> <div></div> <div></div> <div></div> <div></div> <div></div> <div></div> <div></div> <div></div> <div></div> <div></div> <div></div> <div></div> <div></div> <div></div> <div></div> <div></div> <div></div> <div></div> <div></div> <div></div> <div></div> <div></div> <div></div> <div></div> <div></div> <div></div> <div></div> <div></div> <div></div> <div></div> <div></div> <div></div> <div></div> <div></div> <div></div> <div></div> <div></div> <div></div> <div></div> <div></div> <div></div> <div></div> <div></div> <div></div> <div></div> <div></div> <div></div> <div></div> <div></div> <div></div> <div></div> <div></div> <div></div> <div></div> <div></div> <div></div> <div></div> <div></div> <div></div> <div></div> <div></div> <div></div> <div></div> <div></div> <div></div> <div></div> <div></div> <div></div> <div></div> <div></div> <div></div> <div></div> <div></div> <div></div> <div></div> <div></div> <div></div> <div></div> <div></div> <div></div> <div></div> <div></div> <div></div> <div></div> <div></div> <div></div> <div></div> <div></div> <div></div> <div></div> <div></div> <div></div> <div></div> <div></div> <div></div> <div></div> <div></div> <div></div> <div></div> <div></div> <div></div> <div></div> <div></div> <div></div> <div></div> <div></div> <div></div> <div></div> <div></div> <div></div> <div></div> <div></div> <div></div> <div></div> <div></div> <div></div> <div></div> <div></div> <div></div> <div></div> <div></div> <div></div> <div></div> <div></div> <div></div> <div></div> <div></div> <div></div> <div></div> <div></div> <div></div> <div></div> <div></div> <div></div> <div></div> <div></div> <div></div> <div></div> <div></div> <div></div> <div></div> <div></div> <div></div> <div></div> <div></div> <div></div> <div></div> <div></div> <div></div> <div></div> <div></div> <div></div> <div></div> <div></div> <div></div> <div></div> <div></div> <div></div> <div></div> <div></div> <div></div> <div></div> <div></div> <div></div> <div></div> <div></div> <div></div> <div></div> <div></div> <div></div> <div></div> <div></div> <div></div> <div></div> <div></div> <div></div> <div></div> <div></div> <div></div> <div></div> <div></div> <div></div> <div></div> <div></div> <div></div> <div></div> <div></div> <div></div> <div></div> <div></div> <div></div> <div></div> <div></div> <div></div> <div></div> <div></div> <div></div> <div></div> <div></div> <div></div> <div></div> <div></div> <div></div> <div></div> <div></div> <div></div> <div></div> <div></div> <div></div> <div></div> <div></div> <div></div> <div></div> <div></div> <div></div> <div></div> <div></div> <div></div> <div></div> <div></div> <div></div> <div></div> <div></div> <div></div> <div></div> <div></div> <div></div> <div></div> <div></div> <div></div> <div></div> <div></div> <div></div> <div></div> <div></div> <div></div> <div></div> <div></div> <div></div> <div></div> <div></div> <div></div> <div></div> <div></div> <div></div> <div></div> <div></div> <div></div> <div></div> <div></div> <div></div> <div></div> <div></div> <div></div> <div></div> <div></div> <div></div> <div></div> <div></div> <div></div> <div></div> <div></div> <div></div> <div></div> <div></div> <div></div> <div></div> <div></div> <div></div> <div></div> <div></div> <div></div> <div></div> <div></div> <div></div> <div></div> <div></div> <div></div> <div></div> <div></div> <div></div> <div></div> <div></div> <div></div> <div></div> <div></div> <div></div> <div></div> <div></div> <div></div> <div></div> <div></div> <div></div> <div></div> <div></div> <div></div> <div></div> <div></div> <div></div> <div></div> <div></div> <div></div> <div></div> <div></div> <div></div> <div></div> <div></div> <div></div> <div></div> <div></div> <div></div> <div></div> <div></div> <div></div> <div></div> <div></div> <div></div> <div></div> <div></div> <div></div> <div></div> <div></div> <div></div> <div></div> <div></div> <div></div> <div></div> <div></div> <div></div> <div></div> <div></div> <div></div> <div></div> <div></div> <div></div> <div></div> <div></div> <div></div> <div></div> <div></div> <div></div> <div></div> <div></div> <div></div> <div></div> <div></div> <div></div> <div></div> <div></div> <div></div> <div></div> <div></div> <div></div> <div></</div></div></div>								

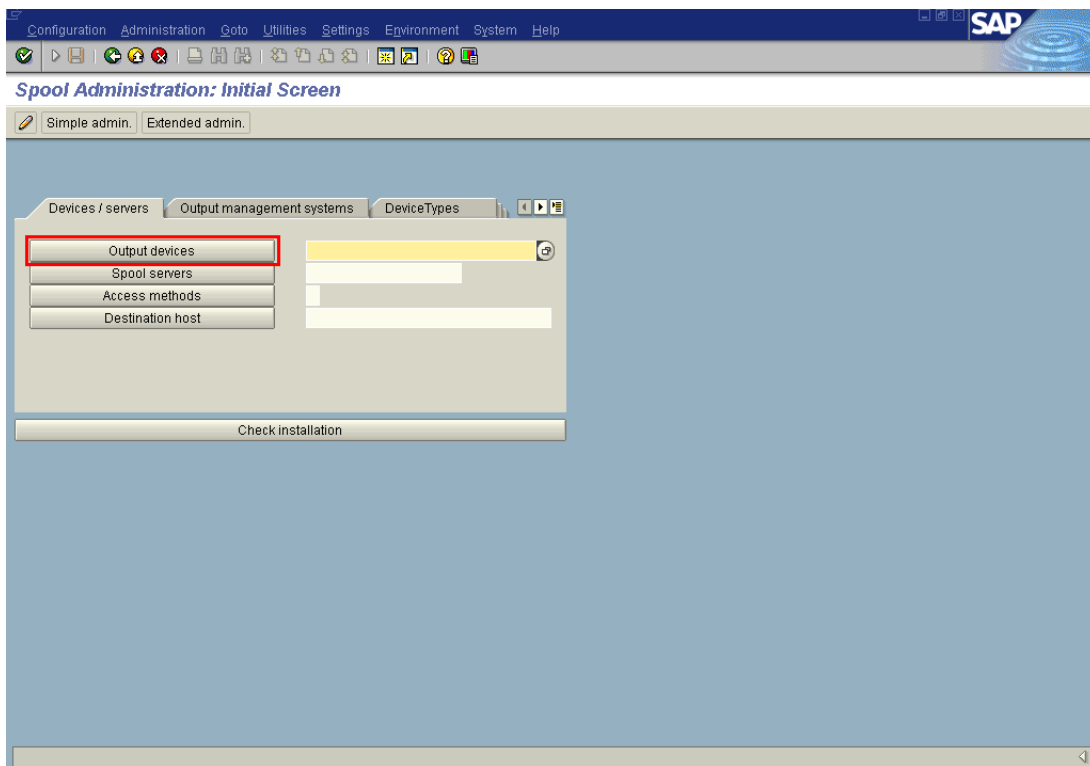
© Copyright 2005 SAP AG, All rights reserved.

The newly imported device type **ZTSB850** should appear in this list of device type. If the **ZTSB850** is not displayed, it implies that import has not been successful for which the Installation procedure described earlier needs to be repeated and verified.

4. Creation of Output Device

In SAP R/3, a device type needs to be assigned to an Output device to utilise its printing features. Follow the procedure describe below to create an output device and assign a device type to it.

In the initial screen of SAP, type the transaction code “SPAD” in the command window and press “Enter”, the following screen is displayed.



© Copyright 2005 SAP AG, All rights reserved.

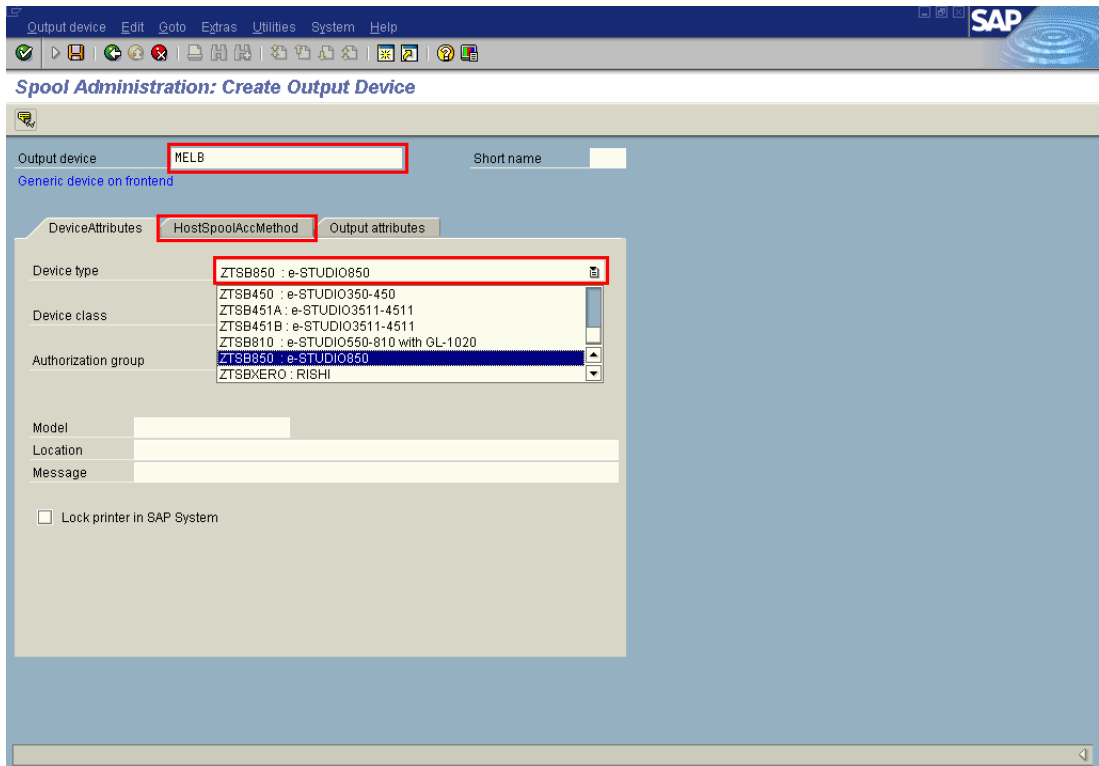
Click on the “**Output devices**” and the following screen is displayed.

Spool Administration: List of Output Devices (Change) (36 ent			
Dev.	Create	Shift+F1	pe Spool servers Location or message
6L1020	F	ZTSB810	
HP LaserJet 8000 DN PCL 6	F	ZHPLJ	
HP-Sujith	F	HPLJ4000	
HP LaserJet8000DNPCL	F	HPLJ551	
HP LaserJet8000DNPCL6	F	HPLJ551	
HP LaserJet8000DNPCL6[1]	F	HPLJ551	
HPSARJAPUR1STFLOOR0CS	F	HPLJ551	
HPSARJAPUR1STGROUP	F	HPLJ551	
HP_LJ4050_PCL	F	HPLJ5	Printer for HP Laser Jet 4050 PCL
I618nW	F	ZI61453A	I618nW
I61_C0L	F	ZI61453A	
I61_Co1	F	ZI61453	Color Printer
LQ1050	F	EPLQ550	
LQ10501	F	EPLQ550	
MyHud	F	ZTSB450	
MyMac2	F	ZTSB451A	
R10	F	ZTSB050	
R1SHI	F	ZTSB200	
ROME	F	ZTSB200	
ZEBRA	F	ZLB_ZEB	
ZHPCHECK	F	ZHPLJ1	
ZTSB00	F	HPLJ111D	
ddd	F	ZTSBXERO	
hariPrinter	F	ZTSB200	Hari's Personal printer.
haririshi	F	ZTSB000	
hpsarjapur1stocs2	F	HPLJ551	
hudson	F	ZTSB450	
hudson_test	F	ZTSB450	
lq10502	F	EPLQ550	
printronix	F	LB_PRI	
printronix2	F	LB_PRI	
red	F	ZTSBXERO	
r10_test	F	ZTSB050	
sarjapur1q1050	F	EPLQ550	

© Copyright 2005 SAP AG, All rights reserved.

Press on the “Create” button, the following screen will be displayed.

4. Creation of Output Device (Cont.)



© Copyright 2005 SAP AG, All rights reserved.

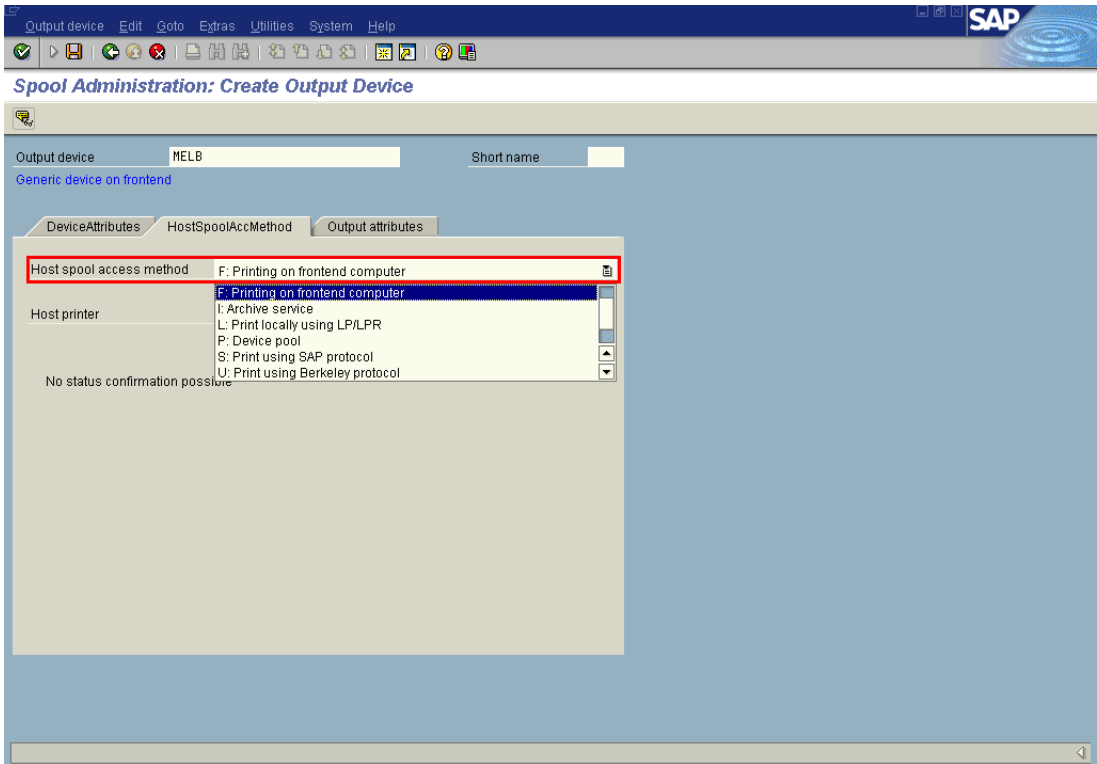
Enter the printer name (**MELB** in the above mentioned example)

Associate output device **ZTSB850: e-STUDIO850** device type.

Make sure Device class is "Standard printer".

Click **“HostSpoolAccMethod”** to visit next part of output device configuration as shown in following screen.

Subsequently choose the appropriate “**Host spool access method**” in the screen displayed below. Here it is selected as “**F**”.



© Copyright 2005 SAP AG, All rights reserved.

4. Creation of Output Device (Cont.)

The screenshot shows the SAP Spool Administration: Create Output Device dialog box. The 'Output device' field is set to 'MELB' and the 'Short name' field is empty. The 'Generic device on frontend' checkbox is checked. The 'Output attributes' tab is selected, showing the 'Host spool access method' as 'F: Printing on frontend computer'. The 'Host printer' field is set to 'TOSHIBA e-STUDIO850 PCL6'. The 'No status confirmation possible' checkbox is checked.

Output device: MELB Short name:

Generic device on frontend

DeviceAttributes HostSpoolAccMethod Output attributes

Host spool access method: F: Printing on frontend computer

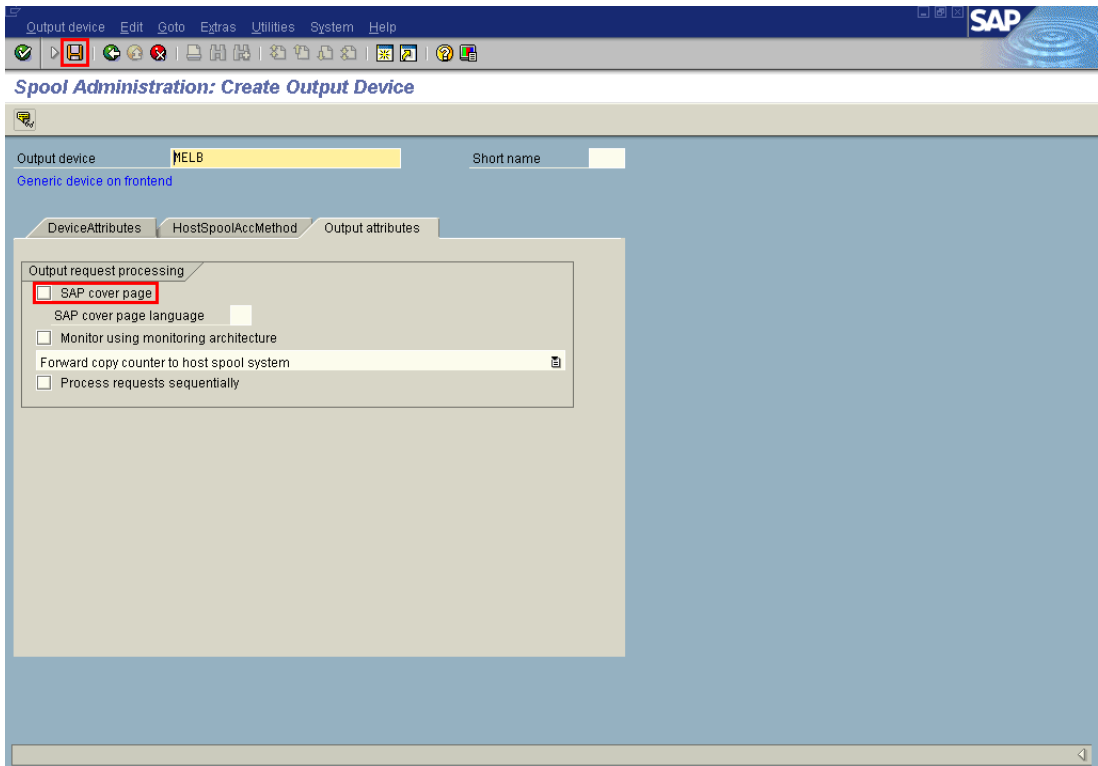
Host printer: TOSHIBA e-STUDIO850 PCL6

No status confirmation possible

© Copyright 2005 SAP AG, All rights reserved.

Enter the **Host printer** name **TOSHIBA e-STUDIO850 PCL6**.

Click on **Output attributes** to visit, next part of output device configuration.



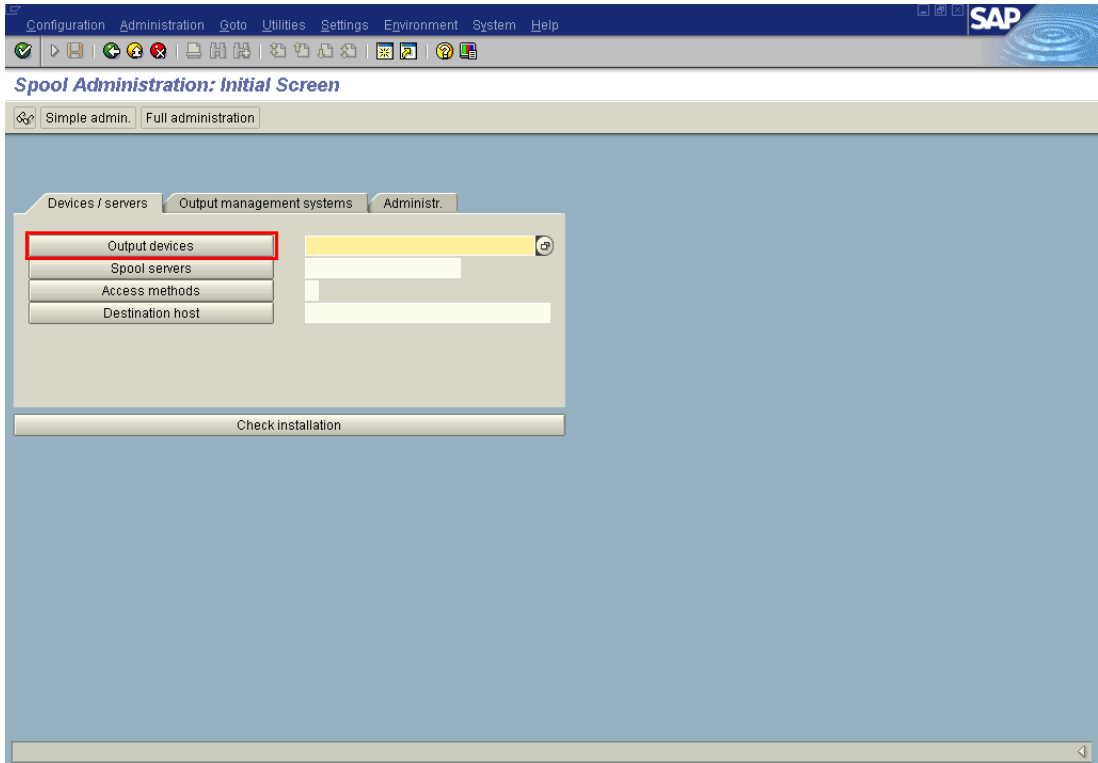
© Copyright 2005 SAP AG, All rights reserved.

(Optional), Administrator can enable printer for printing **cover page** by checking this check box.
Press **“SAVE”** and the Output device will be created.

5. Verification of Output Device

Once the output device is created, it needs to be verified whether the newly created output device appears in the standard list of all output device in SAP R/3 or not. To verify this same, follow the steps given below.

In the initial screen of SAP, type the transaction code “SPAD” in the command window and press “Enter”, the following screen is displayed.



© Copyright 2005 SAP AG, All rights reserved.

Click on the **Output devices** to get list of all output device configured on the SAP/R3 system. Newly created output device **MELB** should appear in this list.

Output device Edit Goto Extras Utilities System Help			
SAP			
Spool Administration: List of Output Devices (Change) (37 ent			
Dev.	Dev. type	Spool servers	Location or message
HPLaserJet8000NPCL	F HPLJ551		
HPLaserJet8000NPCL6	F HPLJ551		
HPLaserJet8000NPCL6[1]	F HPLJ551		
HPSARJAPUR1STFLO0R0CS	F HPLJ551		
HPSARJAPUR1STGROU0P	F HPLJ551		
HP_LJ4050_PCL	F HPLJ5		Printer for HP Laser Jet 4050 PCL
I618nW	F ZI61453A		I618nW
I61_CoL	F ZI61453A		
I61_Co1	F ZI61453		Color Printer
LQ1050	F EPLQ550		
LQ10501	F EPLQ550		
MELB	F ZTSB050		
MyHud	F ZTSB450		
MyMac2	F ZTSB451A		
R10	F ZTSB050		
RISHI	F ZTSB200		
ROME	F ZTSB200		
ZEBRA	F ZLB_ZEB		
ZHPCHECK	F ZHPLJ1		
ZTSB00	F HPLJ111D		
ddd	F ZTSBXERO		
hariPrinter	F ZTSB200		Hari's Personal printer.
haririshi	F ZTSB000		
hpsarjapur1stocs2	F HPLJ551		
hudson	F ZTSB450		
hudson_test	F ZTSB450		
lq10502	F EPLQ550		
printronix	F LB_PRI		
printronix2	F LB_PRI		
red	F ZTSBXERO		
r10_test	F ZTSB050		
sarjapur1q1050	F EPLQ550		
test	F ZLB_ZEB		
zsyed	F ZSYED		

© Copyright 2005 SAP AG, All rights reserved.

Newly created output device **MELB** should appears in the list. If newly created output device (NEW) is now displayed in the list, repeat the process of creating output device.

6. Specific Features and Configuration

6.1 Input Tray Selection

No PjL control is available, so it should be implemented using PCL escape command sequence.

Auto Select	<esc>&l17H
Upper Tray	<esc>&l01H
Lower Tray	<esc>&l4H
Tandem Tray	<esc>&l5H
1st Pedestal	<esc>&l5H
2nd Pedestal	<esc>&l21H
External Tray	<esc>&l20H
Bypass Feed	<esc>&l2H
Insertor Tray	<esc>&l30H

6.2 Output Tray Selection

Following PjL would be used to achieve vaNewus OUTPUT Tray Selection:

Output Tray 1

@PjL SET OUTBIN=OPTIONALOUTBIN1

Output Tray 2

@PjL SET OUTBIN=OPTIONALOUTBIN2

Inner tray

@PjL SET OUTBIN=UPPER

Job Separator Upper

@PjL SET OUTBIN=OPTIONALOUTBIN4

Job Separator Lower

@PjL SET OUTBIN=OPTIONALOUTBIN5

6.3 Paper Selection

This control is accomplished using following PjL.

#@PjL SET PAPER=<PageCode>

Paper Size	Page Code
A3	A3
A4	A4
A5	A5
B4	B4
B5	B5
LETTER	LETTER
LEGAL	LEGAL
LEDGER	LEDGER
STATEMENT	STATEMENT
FOLIO	FOLIO
COMPUTER	COMPUTER
8.5 inch Square	SQ85
13 inch Legal	LEGAL13

6.4 Duplex Selection

Following PJL would be used to achieve vaNewus duplex selections:

No Duplex

@PJL COMMENT DSSC PRINT DUPLEX=0

Long Edge Duplex

@PJL COMMENT DSSC PRINT DUPLEX=1

Short Edge Duplex

@PJL COMMENT DSSC PRINT DUPLEX=2

6.5 Orientation Selection

Following PJL would be used to achieve vaNewus duplex selections:

Portrait

@PJL COMMENT DSSC PRINT ORIENTATION=0

Landscape

@PJL COMMENT DSSC PRINT ORIENTATION=1

6.6 Hole Punch

Following PJL would be used to achieve control over Hole-punching:

No Hole Punch

@PJL COMMENT DSSC PRINT HOLEPUNCH=0

Hole Punch Long Edge without Rotation

@PJL COMMENT DSSC PRINT HOLEPUNCH=1

Hole Punch Short Edge without Rotation

@PJL COMMENT DSSC PRINT HOLEPUNCH=2

Hole Punch Long Edge with 180 degree Rotation

@PJL COMMENT DSSC PRINT HOLEPUNCH=3

Hole Punch Short Edge with 180 degree Rotation

@PJL COMMENT DSSC PRINT HOLEPUNCH=4

6.7 Stapling Function

Following PJL would be used to achieve control over Stapling:

```
Stapling Mode Top Left (Portrait) / Top Right (Landscape)
    @PJL COMMENT DSSC PRINT STAPLING=769
Stapling Mode Left (Portrait) / Top (Landscape)
    @PJL COMMENT DSSC PRINT STAPLING=2
Stapling Mode Bottom Left (Portrait) / Top Left (Landscape)
    @PJL COMMENT DSSC PRINT STAPLING=33027
Stapling Mode Top Right (Portrait) / Bottom Right (Landscape)
    @PJL COMMENT DSSC PRINT STAPLING=387
Stapling Mode Right (Portrait) / Bottom (Landscape)
    @PJL COMMENT DSSC PRINT STAPLING=130
Stapling Mode Bottom Right (Portrait) / Bottom Left (Landscape)
    @PJL COMMENT DSSC PRINT STAPLING=33665
Stapling Mode Top (Portrait) / Bottom (Landscape)
    @PJL COMMENT DSSC PRINT STAPLING=512
Stapling Mode Bottom (Portrait) / Top (Landscape)
    @PJL COMMENT DSSC PRINT STAPLING=33280
```

6.8 Private Print

Following two PJLs would be used to achieve Private Print:

```
@PJL COMMENT DSSC PRINT PRINTMODE=PRIVATE
@PJL COMMENT DSSC PRINT PRIVPRINT=nnnnn
```

Where nnnnn is five-digit code for private printing.

6.9 Proof Print

Following PJL would be used to achieve Proof Print:

```
@PJL COMMENT DSSC PRINT PRINTMODE=PROOF
```

6.10 Booklet and Saddle Stitch

Booklet printing can be achieved using

```
@PJL COMMENT DSSC PRINT BOOKLET=LT
```

Saddle stitch can be achieved using

```
@PJL COMMENT DSSC PRINT STAPLING=1028
```

Booklet function is dependent on Short Edge Duplex printing, Saddle stitch, Left to Right Printing, and the type of paper to be used. Hole punching also needs to be disabled. Therefore, for Booklet printing, the following combination of commands needs to be enabled.

```
#@PJL COMMENT DSSC PRINT HOLEPUNCH=0
#@PJL COMMENT DSSC PRINT DUPLEX=2
#@PJL COMMENT DSSC PRINT STAPLING=1028
#@PJL COMMENT DSSC PRINT LEFTTORIGHT=1
#@PJL COMMENT DSSC PRINT BOOKLET=LT
#@PJL SET PAPER=<PageCode>
```

Paper Size	Page Code
A3	A3
A4	A4
A5	A5
B4	B4
B5	B5
LETTER	LT
LEGAL	LG
LEDGER	LD
STATEMENT	ST
FOLIO	FO
SQ85	SQ
13 inch Legal	13

6.11 Department Code

Following PJL would be used to have department code based access to the printer:

If Department code is NULL

```
@PJL COMMENT DSSC PRINT ACCESSCODE=
```

If Department Code is 5 digit number (nnnnn)

```
@PJL COMMENT DSSC PRINT ACCESSCODE=nnnnn
```

6.12 BOX Mode

Following combination of PJL would be used to have BOX mode printing:

For Public Box use 000, for private use three digit no

```
@PJL COMMENT DSSC PRINT PRINTMODE=BOX\r\n
```

```
@PJL COMMENT DSSC BOX BOXNO=nnn\r\n
```

```
@PJL COMMENT DSSC BOX BOXNAME=\r\n
```

```
@PJL COMMENT DSSC BOX BOX=1\r\n
```

If Private Box is used, then set 5digit BOX PASSWORD

```
@PJL COMMENT DSSC BOX BOXPASSWORD=12345\r\n
```

6.13 Inserter Option

Following PJL is used to invert or non invert the inserter page:

```
@PJL COMMENT DSSC INSERTER PAPERINVERTED=0\r\n
```

```
@PJL COMMENT DSSC INSERTER PAPERINVERTED=1\r\n
```

MULTIFUNCTIONAL DIGITAL SYSTEMS
SAP R/3 Printing Device Type File Installation Guide

e-STUDIO520/600/720/850

TOSHIBA TEC CORPORATION

2-17-2, HIGASHIGOTANDA, SHINAGAWA-KU, TOKYO, 141-8664, JAPAN